



WJT INDIA PVT.LTD.

We Deal in Diamond & Jewellery Machinery

WJT INDIA PVT. LTD., We are a prominent manufacturer, whole seller, importer and exporter of Jewellery tools and equipment.

Our Mission is to expand and continually improve utilizing quality practices and deliver superior quality product and services of exceptional value to our customers to gain competitive advantage in their markets.

Our products line ranges from Jewellery Engaver, Jewellery 3D Scanner, 3D Printer, Diamond Tester, Micro Motor, Lazer Marker, Lazer Welding Machine Casting Equipment & Investment Mixer etc... Which are widely used in Gems & Jewelry Industry, Dental Industry and Watch Industries.

We cater our services to local and international customers with our branches at Bangkok Thailand & Mumbai Maharashtra.



PRODUCT
CATALOGUE



Office No. 302, 3rd Floor, A wing,
Key Tech Park, S.V.Road, Oshiwara,
Jogeshwari West, Mumbai - 400102, India.



Sales@wjtindia.com



+91-8850154861
+91-9324798925



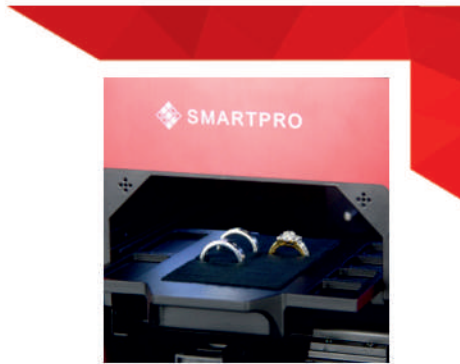
www.wjtindia.com



Diamond Tester

SMARTPRO

AURA



Professional Approach

- Auto-generated test result certification
- Easy to use and user friendly
- The space saver for the gemologist
- No external PC/Laptop required
- Screen share with smart device



AURA IQ

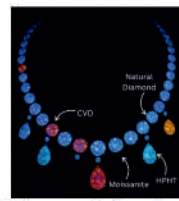
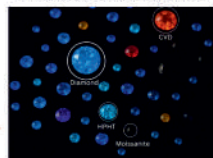
SYNTHETIC DIAMOND SCANNER

Testing Capabilities:

- Natural Diamond
- CVD Synthetic Diamond
- HPHT Synthetic Diamond
- Moissanite (no fluorescent image)
- Cubic Zirconia



Loose Diamonds



Diamond Jewelry

CONNOISSEURS



TOWN TALK



CAST TECH

Mini Semi Automatic Casting Machine

Electromagnetic Stirring

Integrated Molding

Temperature Control

Capacity 1Kg



Voltage: 220V 50/60Hz Power: 5000W
 Melting Time: 3-5 minutes
 Machine Net Weight: 100KG
 Capacity: 1KG Gold
 Machine dimension: 560*560*780mm
 The max steel flask size: 4*5 Inch
 The max melting temperature:
 K thermocouple 1150°C /R thermocouple 1350°C
 (The standard configuration: K thermocouple)

ALTIN INDUCTION MELTER

- * All functions are microcomputer controlled
- * Extremely quiet operation
- * Digital power adjustment and indicator
- * High efficiency using a solid -state generator
- * Maximum Temp : 1200° C



Diamond Tester



MAX 5 IN 1

Capable of testing Natural Diamond, Typella/CVD/HPHT, Moissanite, Diamond Simulant, and Cubic Zirconia (CZ)



WHY MAX

- Capable of testing Loose and Mounted Stones as small as >0.02 CT
- Multiple Speaking languages (supports 11 international languages)
- Rated Power: VDC 5 V / 1 – 2.4 A
- Test Probe 1.0 mm Copper Tube with Optical Fiber

OPTIMUM-I

TYPE IIA / HPHT / CVD & MOISSANITE SCREENER (INCLUDING F1 MOISSANITE)

WHY OPTIMUM

- Identify between Earth-Mined Diamond, from Lab, created type Iia / CVD / HPHT
- Testing Range: 0.015ct+
- Moissanite (including F1 Moissanite)
- Colour Range: Colorless to near-colorless (D-M)



Loose Diamonds



Mounted Stones



Diamond Tester



READER-I

2 in 1 DIAMOND AND MOISSONITE MULTI TESTER



Why Reader

- Based on high Thermal Electrical Conductivity Technology
- Differentiates Moissanite and Diamond
- Testing Range: 0.01ct +
- Low battery indicator
- Connects wirelessly with SmartPro APP

GEM EYE-I

COLOUR STONE ESTIMATOR

Why Gem Eye

- High-efficiency gem tester
- Thermal Conductivity Technology Based
- Easy-to-read large analog panel display
- No waiting time between tests
- Simple and easy to use functions
- Testing Range: 0.01ct +
- LED Light Indicators
- Connects wirelessly with SmartPro APP



NEW ARRIVAL

MASTER 3D

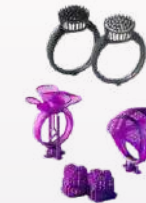
User Friendly 3D Printer



Mini 8K

Specification

Light Source: Linear Projection LED Module
XY Resolution: 22 μ m
Layer Thickness: 0.01-0.30 mm
Maximum Printing Speed: 80 mm/hr
Printer Size: 29 x 29 x 43 cm
Print Volume: 16.5 x 7.2 x 18 cm



Mega 8K

Specification

Light Source: Linear Projection LED Module
XY Resolution: 0.043 mm
Layer Thickness: 0.01-0.30 mm
Maximum Printing Speed: 70 mm/hr
Printer Size: 47 x 40 x 68 cm
Print Volume: 33 x 18.5 x 40 cm

- Prints beyond handcrafted models
- Prints high-quality models with extreme stability
- Allows models to attach firmly onto the building plate
- Enhances light uniformity to create superb & sharp models



Diamond Tester

SMARTPRO

SCREEN-I

Can screen Natural Diamonds (Type Ia) from Synthetic Diamonds HPHT / CVD (Type Iia)



WHY SCREEN-I

- Rated Power: VDC 5 – 6V / 1 – 2 A
- Designed for Colourless to Near Colourless (D to J)
- Can test from 0.01 CT up to 12 CT
- USB Cable Type: USB 2.0 type A To Micro USB type B

Optiloope

LED Headband Magnifier Loupe



The SmartPro Optiloope is a professional-grade headband magnifier designed for enhanced visibility in precision tasks.

Item No.	Focal Length	Magnification
SP 3	14 inches	1.75x
SP 4	10 inches	2x
SP 5	8 inches	2.5x
SP 7	6 inches	2.75x
SP 10	4 inches	3.5x



Micro Motor



- RPM : max 40,000 rpm
- Torque : 280 gf.cm
- Handpiece : (Strong 102L)
- Right & Left Ability
- Non stage speed system
- Foot On/off control

Photon Lazer Welder

Model : WJTJ200
 Laser Power : 200W
 Laser Type : YAG
 Laser wavelength : 1064mm
 Pulse width : 0.1~20ms
 Frequency : 1~20Hz
 Cooling System : Water Cooling with
 Inbuilt Water Chiller
 Rated Power : <6KW
 Power Required : 220V



Model : WJTJ150
 Laser Power : 150W
 Laser Type : YAG
 Laser wavelength : 1064mm
 Pulse width : 0.1~20ms
 Frequency : 1~20Hz
 Cooling System : Water Cooling with
 Inbuilt Water Chiller
 Rated Power : <6KW
 Power Required : 220V



Photon Lazer Marker



- Power: 20W
- Laser Type : Fiber
- Speed : 6000mm/s
- Built in camera
- Marking Size : 70x70-300 x 300mm
- Weight : 6.5 Kgs

 SMARTPRO

AIR DO X

2 in 1 Hand Jewellery Engraver
 Setting & Micromotor



Professional Approach

- Ideal for Stone Setting, Engraving, Drilling, Polishing, buffing, lapping, etc
- Digital LED display function for Tool selection and speed control
- Overload protection and Automatic emergency stop to avoid any accidents
- Achieve highest Precision with advanced adjustment speed controls
- Affordable and Compact system to unleash inner creativity
- Reliable and ultra-durable for all work environments

Why Air Do X

- Precise Pneumatic System
- Free from External Air Compressor
- Micro-Motor for Drilling, Polishing
- Space Saver and easy to operate.
- Powerful Strokes Starts from 240 SPM
- 35000 RPM micro-motor Speed
- Micro-Motor Torque: 2.8N.cm
- Adjustable hand and foot switch control
- Powered by 220/110 V

SMARTPRO QUIZ

Precious Metal Analyzer

Applications

- Gold karat classification with pinpoint accuracy
- Detection of gold plating / layered metals
- Alloy composition for Au/Ag/Pt/Pd/Cu
- Watch components authentication
- QC for manufacturers & refiners
- Customs inspection & recycling centers

Key Advantages

- **Fast Analysis** : Full composition results in **10–60 seconds**.
- **Dual Detector Choice** : **SDD** for high-resolution, laboratory-grade performance. **SI-PIN** for essential accuracy.
- **Plating & Coating Detection** : Instantly identifies surface plating and layered metals.
- **Precision Targeting** : Integrated HD camera with fixed 1 mm analysis spot for accurate positioning.
- **Intuitive Touch Interface** : Simple, clear workflow that requires minimal training.
- **Transparent Safety Lid** : Full customer visibility for total confidence.
- **High Safety Standard** : Certified radiation < 1 μ Sv/h with automatic interlock protection.
- **Customer Display Support** : USB connectivity for real-time viewing.
- **Elegant Compact design** : Space-efficient design for clean and organized work areas.



Technical Specifications

Parameter	Specification
X-ray Source	40 kV microfocus tube, long-life design
Detector (TEC cooled)	<ul style="list-style-type: none"> • Standard: High-resolution SDD detector, 135–145 eV at Mn Kα, Active area 25 mm² • Optional: Si-PIN diode detector, Active area 6 mm²
Detectable Element Range	From Mg (12) to U (92)
Typical Accuracy	Precious metals & jewelry <0.10% (application/method dependent)
Collimator	Fixed 1 mm analysis spot
Camera System	High resolution-definition live-view targeting camera with LED illumination
Analysis Chamber	Protective X-ray shielded chamber with sample tray
Safety System	Lid interlock auto-shutdown; radiation level < 1 μ Sv/h
Operating system	Embedded: Windows CE PC (optional): Windows XP / Vista / 7 / 8
Connectivity & I/O	USB, MicroSD, Ethernet (LAN), Wi-Fi
User Interface	5-inch High-resolution touchscreen
Power	100–240 V AC, 50/60 Hz
Dimensions	Unit: 210 mm x 272 mm x 198 mm Chamber: 160 mm x 174 mm x 74 mm
Weight	5.5 kg.

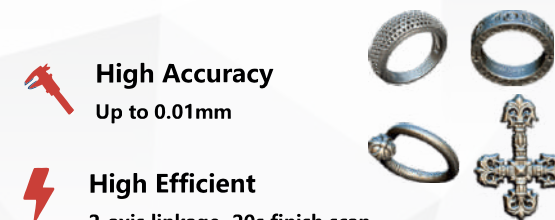
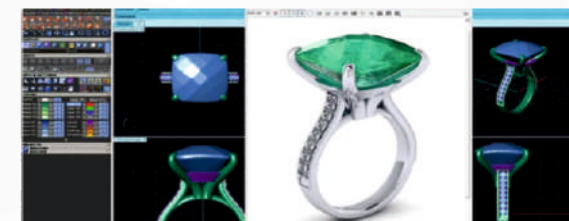


- **Short** processing times
- **Homogenous** results
- **Filigree** jewellery
- High gold **recovery** rate
- **Quiet** work

NAME	POWER	DIMENSIONS IN mm (WXDXH)	WEIGHT (KG)	JIGS
IQ NANO	230 V; 50 Hz	330x410x690	28	8/16

MASTER 3D

Full automatic 3D Scanner



High Accuracy
Up to 0.01mm

High Efficient
2-axis linkage, 20s finish scan

Easy to operate
Simple UI design to guide operation

Application
5mm-80mm sized jewelrys and objects design

range 70 mm

speed 0.3 s

Accuracy 0.008mm



Ultra Sonic Cleaner

Digital display and control,add new degas function and power adjustment function(0% -100% adjustable)
 Industrial high Q transducers,cleaing conversion efficiency is higher
 No-stud welding technology,cleaing effect is better
 MCU-SWEEP ultrasonic generator frequency-drive, ultrasonic cleaning more uniform, more powerful
 MCH heating system,maximum temperature up to 80°C
 All stainless steel material, inner tank is made by punching SUS304 1.0mm
 2500V high voltage test to ensure the product safety,Strict production process,aging process and quality control

Steam Cleaner



Model : WJT -UC20L /UC30L

Frequency : 40 Khz
 Ultrasonic Power : 360W
 Heating Power : 400W
 Capacity : **20 & 30 Litre**



Model : WJT -UC/MF22L /30L

Frequency : 40/80/120 Khz
 Ultrasonic Power : 480/600W
 Heating Power : 500/600W
 Capacity : **22& 30 Litre**



Model : Reliable 8000CJ

Boiler : 1200W
 Operating Pressure : Up to 60 PSI, 4.1 Bar
 Steam temperature : 105C
 Capacity : Automatic Steam



Model : Reliable 6000 Cj

Boiler : 1200W
 Operating Pressure : Up to 60 PSI, 4.1 Bar
 Steam temperature : 105C
 Capacity : **6 Litre**



Model : WJT -UC 5L

Frequency : 40 Khz
 Ultrasonic Power : 120W
 Heating Power : 200W
 Capacity : **05 Litre**



Model : WJT -UC11L

Frequency : 40 Khz
 Ultrasonic Power : 240W
 Heating Power : 30W
 Capacity : **11 Litre**



Model : WJT AD

Tank Dimension : 240x137x100mm
 Maximum Load : 1 Kg
 Heating Power : 480W
 Max Temp : 70 C



Model : JewelSpa

Frequency : 40 Khz
 Ultrasonic Power : 240W
 Heating Power : 30W
 Capacity : **11 Litre**